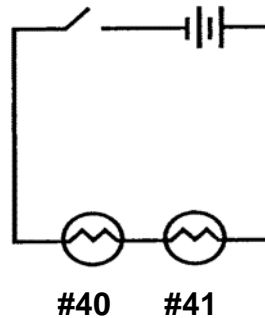


Quiz #5

Circle the letter of the correct answer for Questions 1 – 3.

1. When the switch is closed in the circuit below, which of the statements is true? Remember, a #40 bulb has a thinner filament than a #41 bulb.

- A. Only the #40 bulb lights.
- B. Only the #41 bulb lights.
- C. Both bulbs light.
- D. Neither bulb lights.

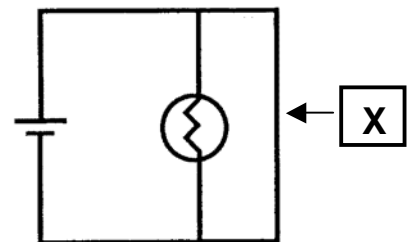


2. The purpose of a fuse is

- A. to prevent the lights from going out.
- B. to connect two wires together.
- C. to act as a safeguard.
- D. to conserve energy.

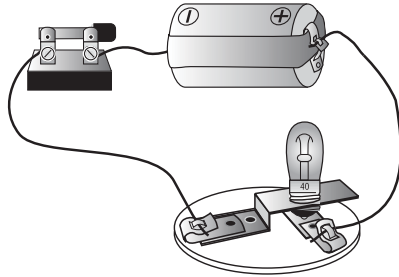
3. The bulb in the circuit below does not light because wire X

- A. is too long.
- B. has the same resistance as the bulb.
- C. has more resistance than the bulb.
- D. has less resistance than the bulb.



4. Explain why a highly resistant wire, such as Nichrome wire, would be used in an electrical heater?

5. The diagram below shows an electrical circuit.



What kind of energy from the battery is changed into electrical energy?

_____energy

6. When the flashlight is turned on, electrical energy is changed to which types of energy?



_____ and _____energy

7. Explain the energy transformation that takes place in the model heater.
